

EFFICIENSEA
2.0 GETTING CONNECTED



e-Navigation
Underway 2016

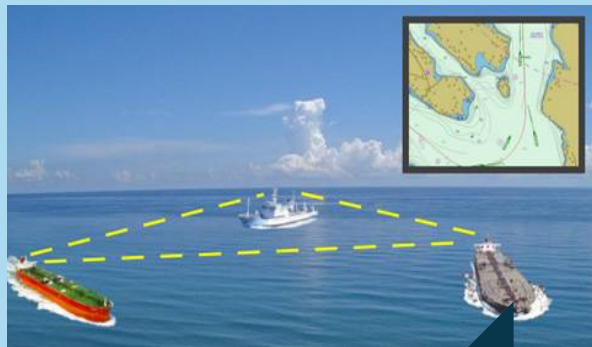
THE CONCEPTS OF THE MARITIME CLOUD

Axel Hahn (OFFIS), Jens Jensen (DMA), Mikael Lind (Viktorias Swedish ICT),
Thomas Lutz (Frequentis), Benjamin Weinert (OFFIS),
Jin H. Park (KRISO)

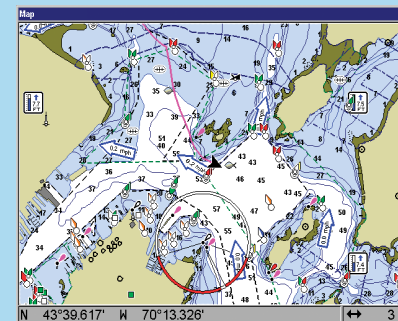


THIS PROJECT HAS RECEIVED FUNDING FROM THE EUROPEAN
UNION'S HORIZON 2020 RESEARCH AND INNOVATION
PROGRAMME UNDER GRANT AGREEMENT NO. 636329

Technology on its way to the Ocean

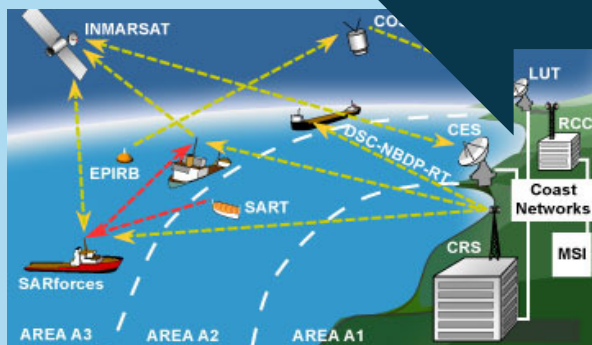


Automatic Identification System



Electronic Nautical Charts

What's the glue?



GMDSS



Vessel Traffic Services / Logistics

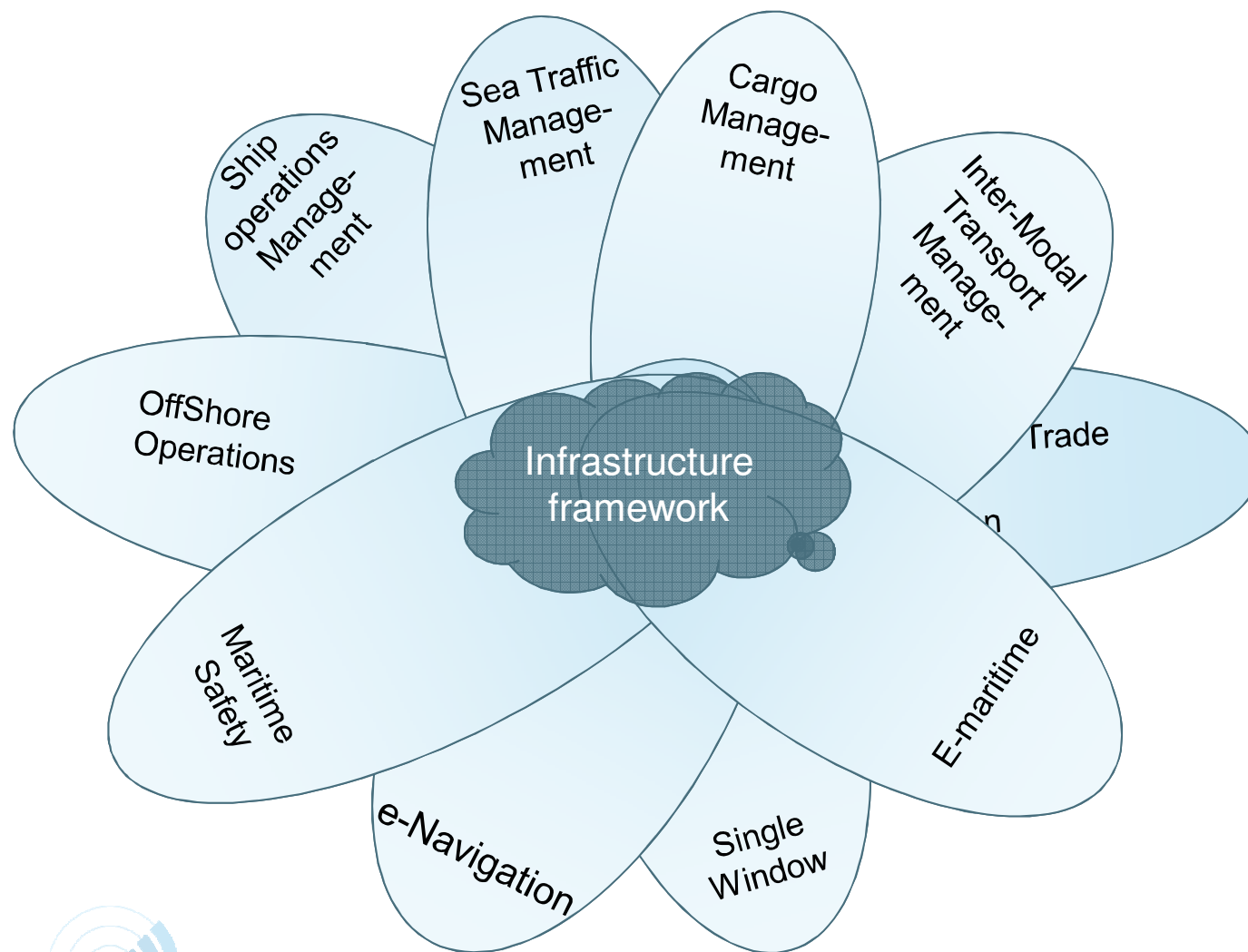
WE HAD A DREAM...



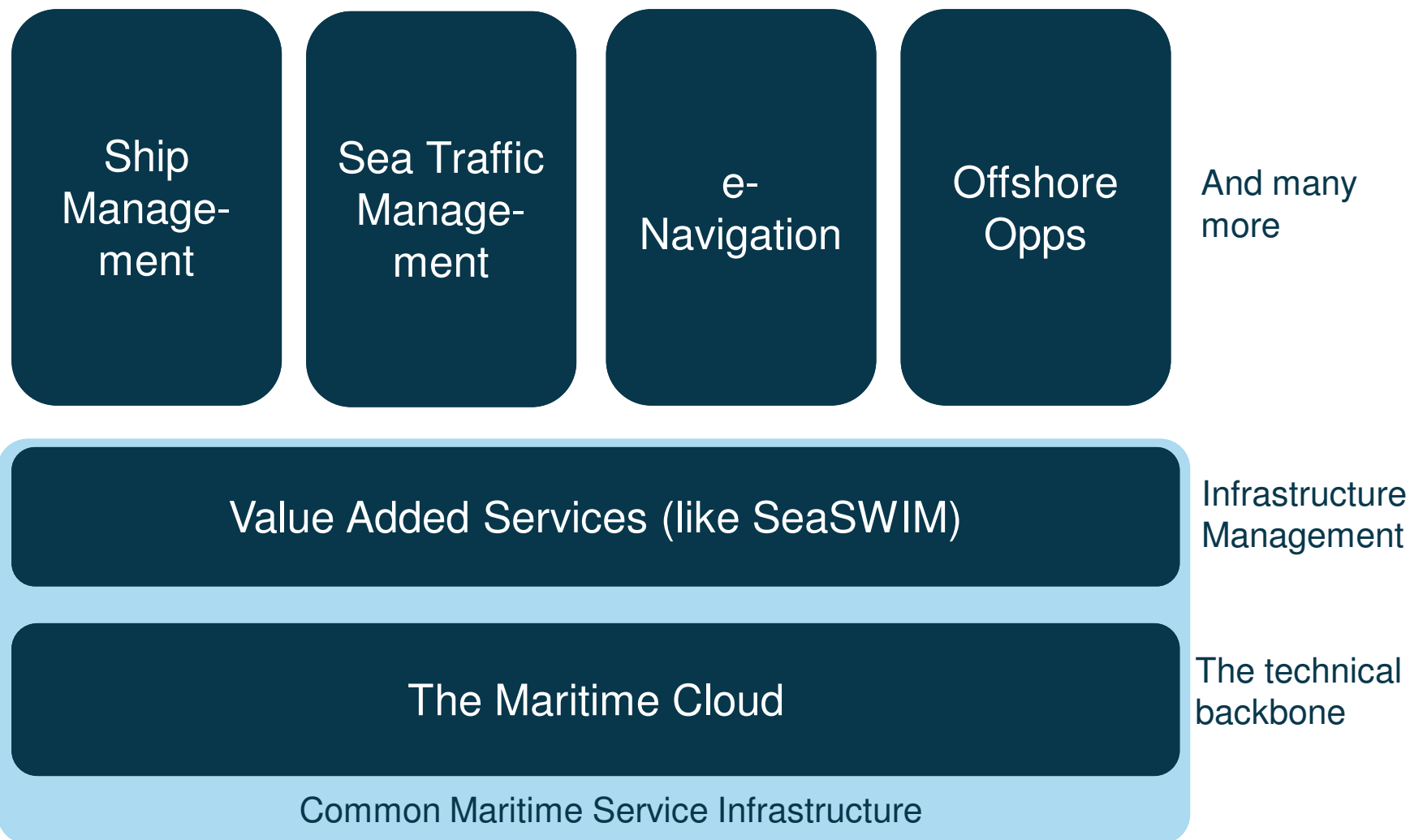
The Glue: The Internet of the Seas



The Maritime Infrastructure Framework

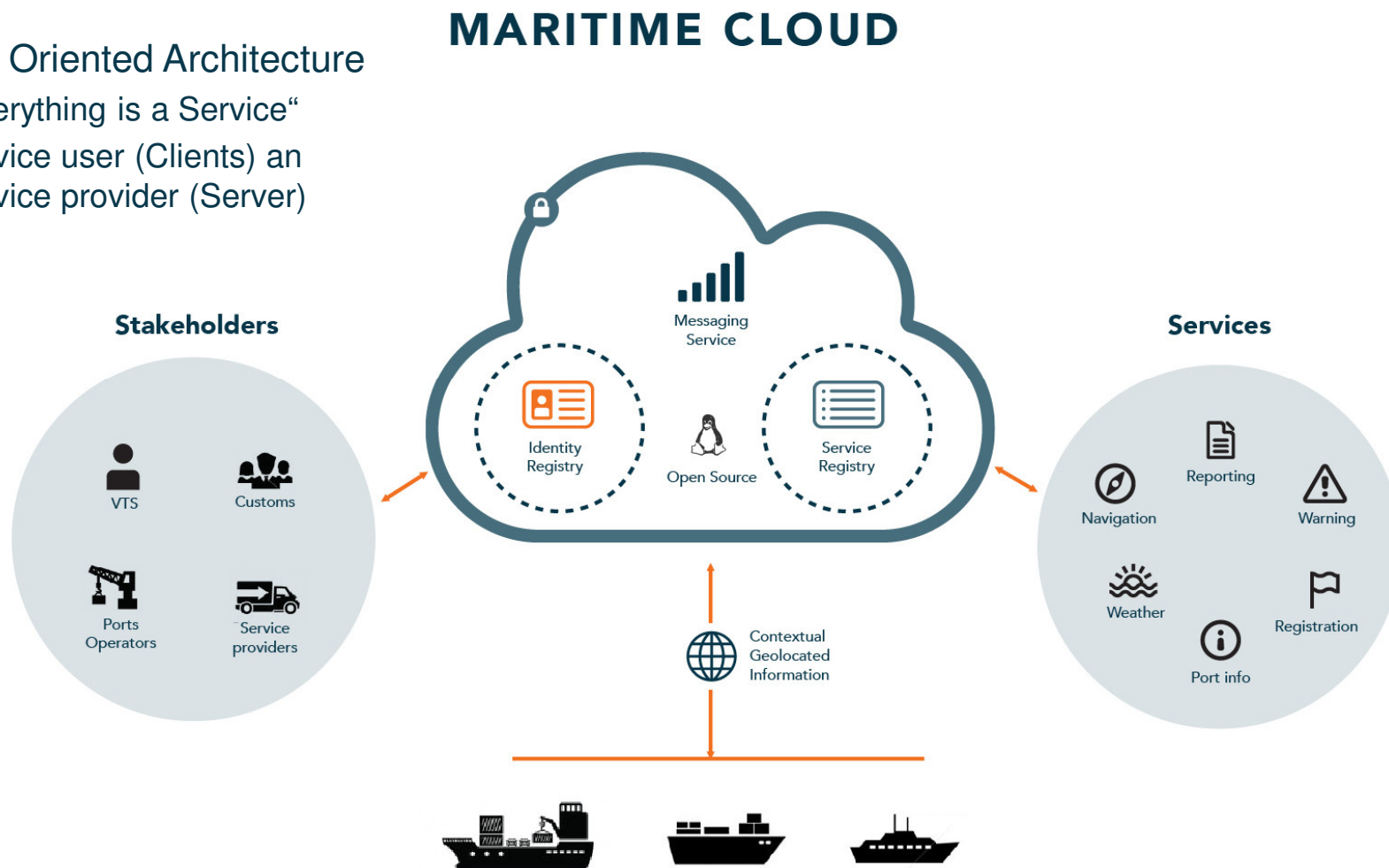


The Architecture of the „The Internet of the Seas“

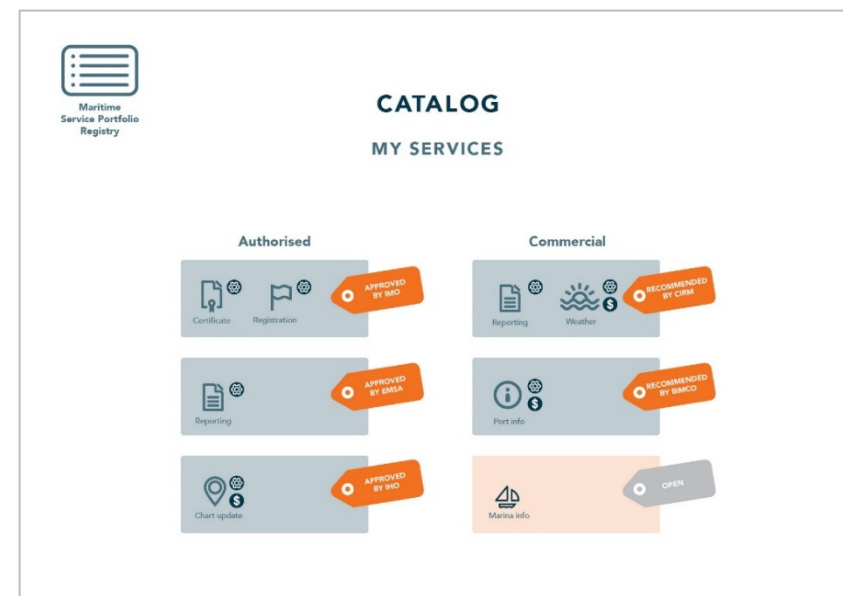
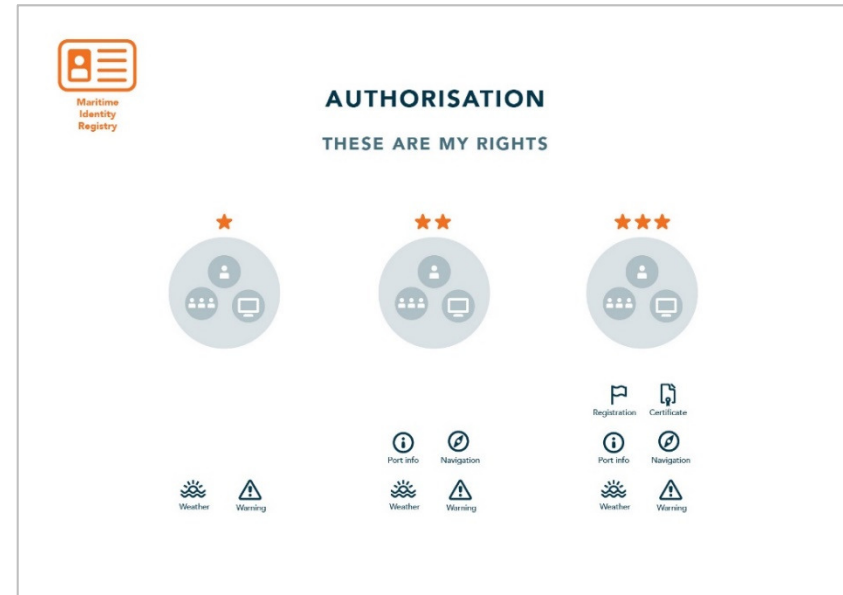
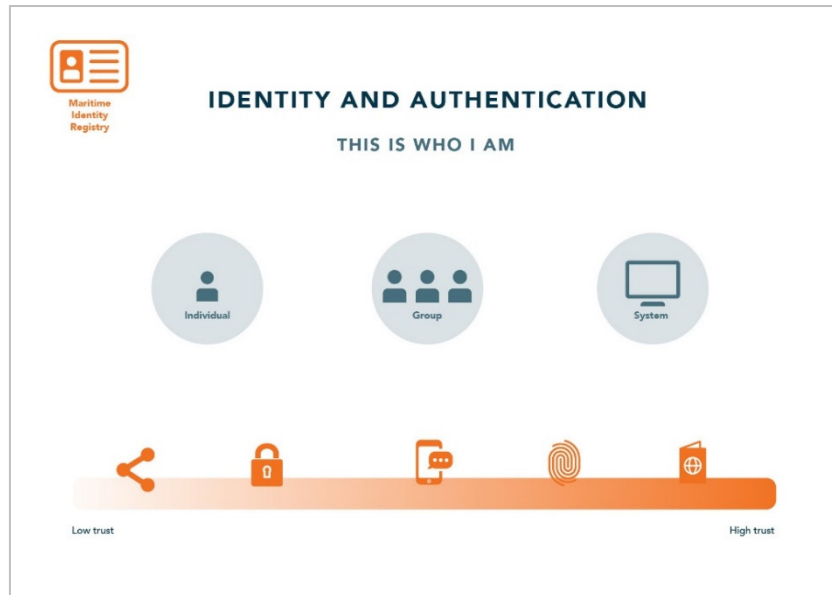


The Maritime Cloud: A Quick Recap..... The Concept

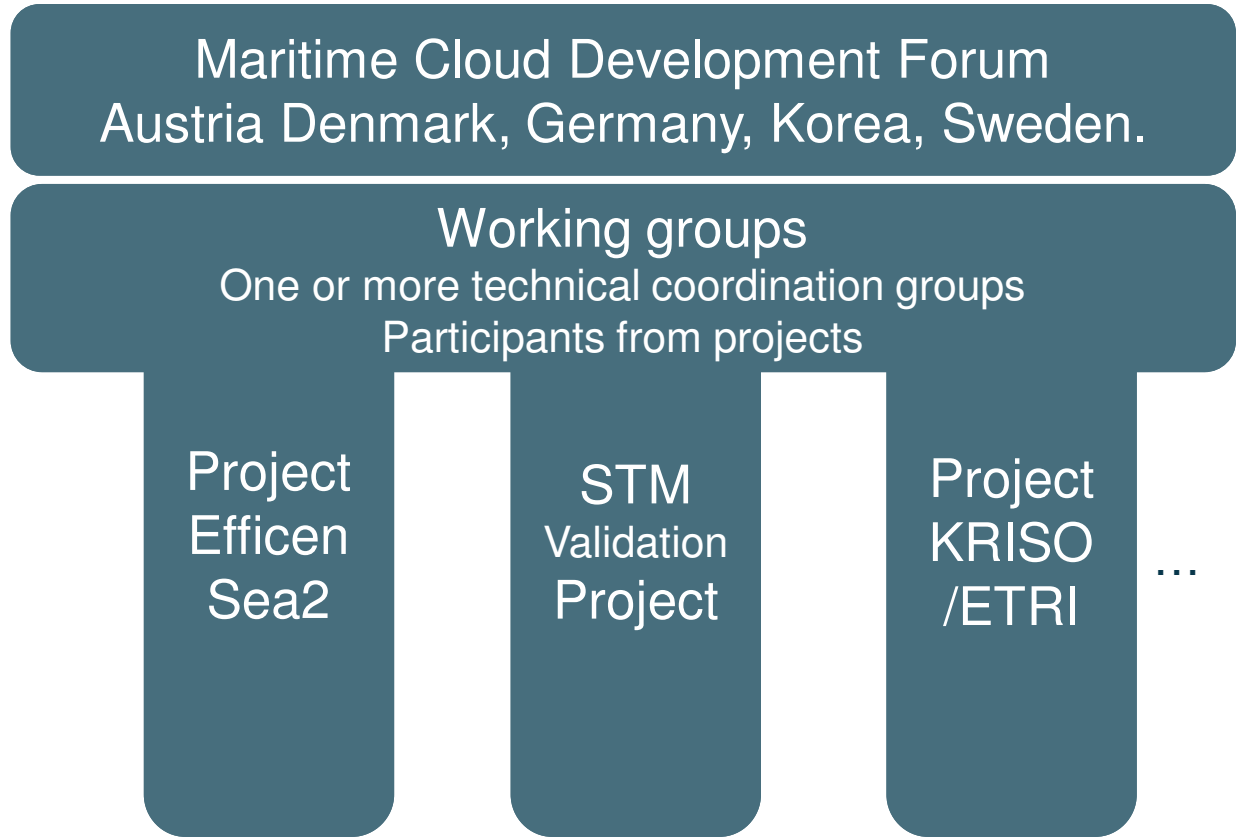
- An Internet Protocol (IP) based multimodal communication Backbone
- A Service Oriented Architecture
 - „Everything is a Service“
 - Service user (Clients) an Service provider (Server)



The Maritime Cloud: A Quick Recap..... Additional Elements



Established „Maritime Cloud Development Forum“ to Coordinate the Work



Develop the Maritime Cloud concept with the aim of becoming the global infrastructure for e-Navigation

Develop the Maritime Cloud in order to meet infrastructure requirements in EfficienSea2, STM validation and KRISO/ETRI e-navigation projects

Implementation and realisation of the Maritime Cloud Concept



Coordinated by:  DANISH MARITIME AUTHORITY

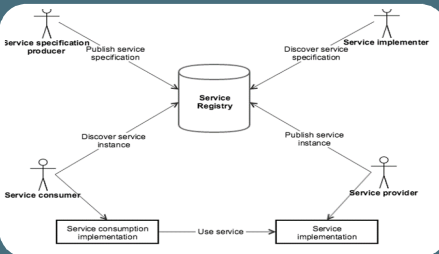


MCDF Working Groups



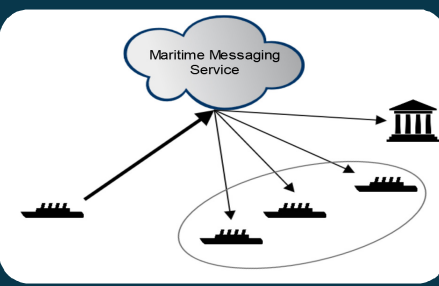
Identity management and security

Lead by DMA



Service specification and provision

Lead by OFFIS



Communication and Messaging

Lead by KRISO

MCDF: Lightweight Cooperation

GoToMeeting



GitHub

Do You have a Contribution? Join the Team!

